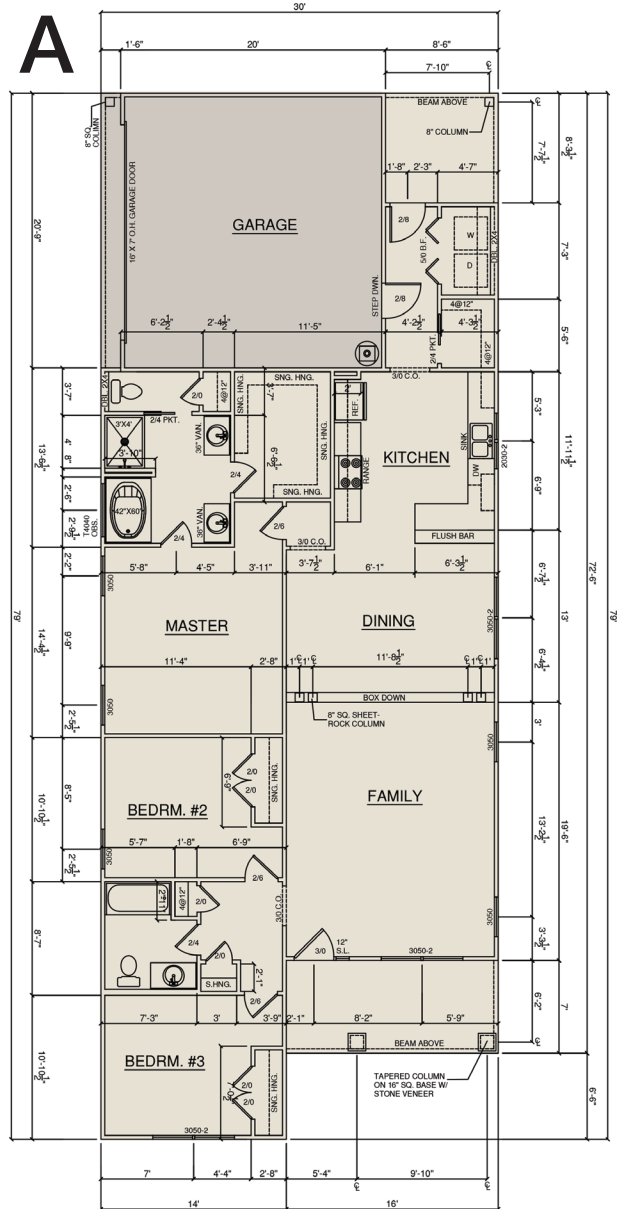




# THE WILLOW:

*Classic Craftsman Style Homes  
in a Historic Alcoa Neighborhood*

- Vinyl Single-Hung Windows
- Cedar Shake and Board & Batten Accent Siding
- 30-year Dimensional Roof Shingles
- Carriage Style, Insulated Garage Doors w/2 Remotes
- Exterior Light Fixtures
- 5" Metal Gutters
- Fiberglass Stained or Painted Front Door
- 9' Ceilings on Main Floor (8' on Second Floor)
- 50 Gallon Water Heater
- Digital Thermostat HVAC System
- Laminate Hardwood Flooring in Main Living Areas
- Carpet w/8 lb. Padding in Bedrooms
- Whirlpool Stainless Steel Range
- Self-Cleaning Oven, Microwave, and Dishwasher
- Stainless Steel Under-mount Kitchen Sink
- Granite Kitchen Countertops
- Sussex Flat Panel Cabinetry
- Kichler Lighting Fixtures – Nickel or Bronze
- Vinyl Closet Shelving
- Cable/Phone Outlets in Family Room and Bedrooms
- Two Hose Bibs



**FIRST COMMERCIAL**  
REAL ESTATE  
Danny Kirby | 865-588-1000 | dkirby@5881000.com

**Contact: Danny Kirby**  
865-588-1000  
dkirby@5881000.com

www.5881000.com  
P.O. Box 10226  
Knoxville, Tennessee 37939

**SPRINGBROOK**  
COMMONS